

# SPORTELLO LAVORO

**SUPPORTING WORKERS AND VULNERABLE  
WORKERS IN LABOR TRANSITIONS**

Presented by Alessio Nasoni, Felsa Cisl Firenze Prato







## THE THREE STEPS OF ITALIAN JOB MARKET:

- The idea of permanent job
- Poor employment services
- The power of the "word of mouth"



sportello lavoro  
CISL FIRENZE PRATO



THE DREAM OF OUR TRADE UNION:

---

# A CONCRETE HELP IN THREE ACTIONS

CULTURAL CHANGE



EMPATHY



TECHNICAL SUPPORT





OUR TARGET

**“WE DO NOT GUARANTEE YOU A JOB  
BUT WE ARE COMMITTED TO  
INCREASING YOUR EMPLOYABILITY”**



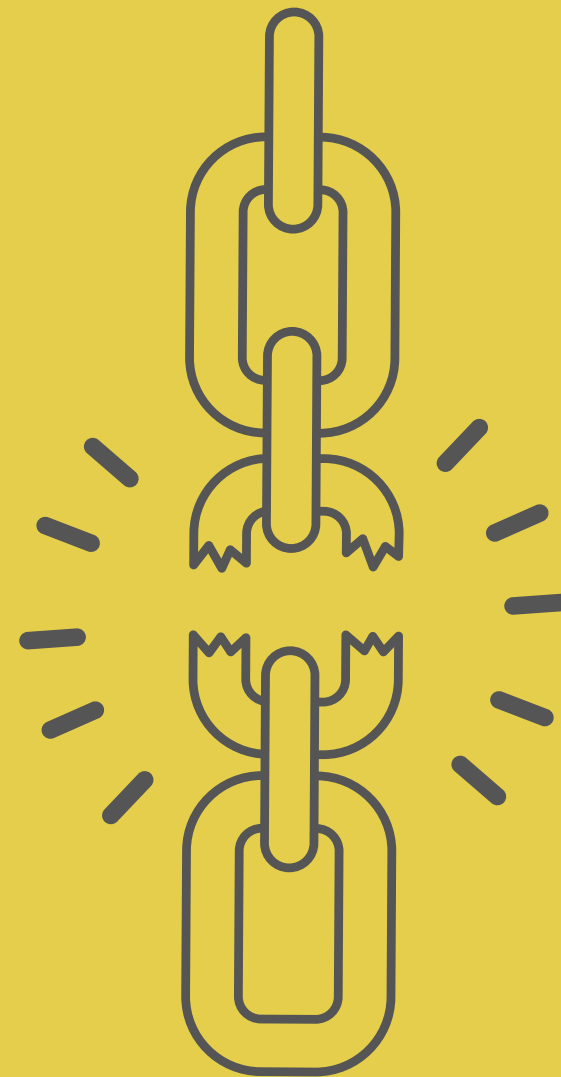
-The involvement of workers in a changing scenario.  
Perspectives of vulnerable groups-







# THE NEO-VULNERABLES



MANDATORY PLACEMENT'S WORKERS



NEW MOMS



YOUNG PEOPLE



NOT "UPDATED" WORKERS



LONG TIME UNEMPLOYED



INSUFFICIENT JOB'S SEARCH SKILLS



-The involvement of workers in a changing scenario. Perspectives of vulnerable groups-





# NOT ONLY NUMBERS!



PROFILES 1500



INTERVIEWED 500



PLACEMENT 15%

## AGE RANGE

under 30	28%
30-50	47%
over 50	25%





# GOOD IDEA GOOD PRACTICES

Sportello Lavoro:  
not only a service,  
but also **a new way of doing and thinking**  
about the role of the trade unionist.  
**We have to interpret and ride the change.**

The example of "Vitesco Technologies"



vitesco  
TECHNOLOGIES



WINS

-The involvement of workers in a changing scenario. Perspectives of vulnerable groups-



sportello lavoro  
CISL FIRENZE PRATO